



VMI AB SpectraPro

Description of installing SpectraPro version 4.17.35 and older on Windows.

Artin Pirouzram
artin@vmiab.com

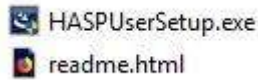
Follow this instruction, step by step for a successful installation.



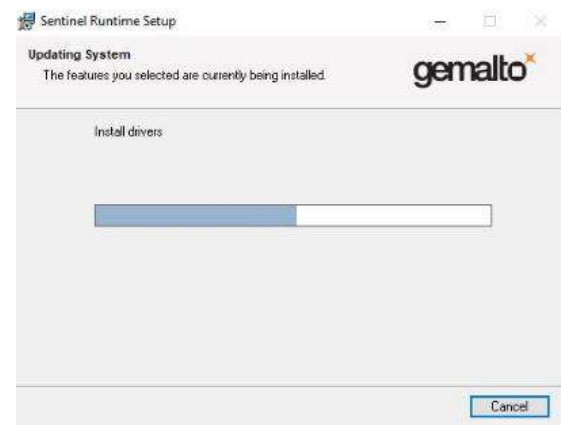
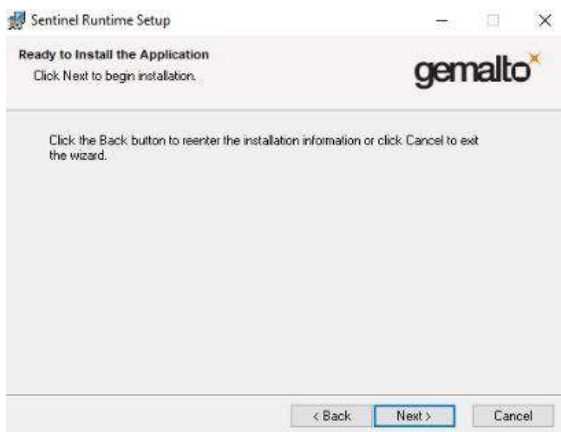
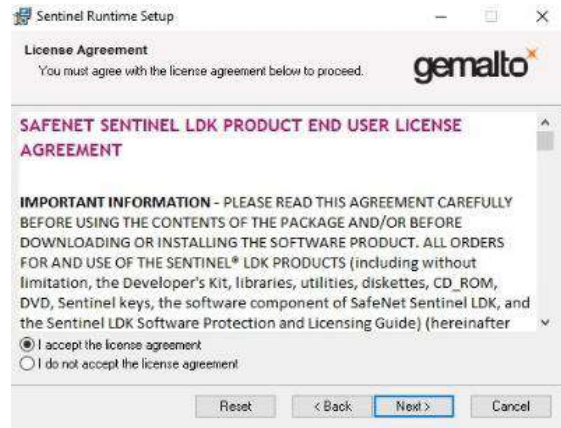
1. Open the CD image folder

- Documents
- HASP Drivers
- HASP UPGRADE KIT
- ServicePack
- SpectraPro
- SystemChecker
- User manual
- XVIBER USB DRIVERS

- Open "HASP Drivers" folder. Right-click on "HASPUserSetup.exe" and choose "Run as administrator".



Follow all steps below until the driver is installed.



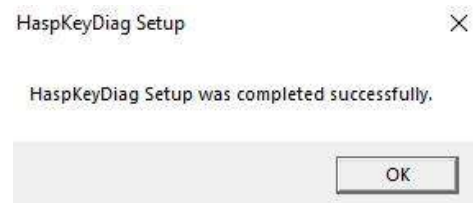
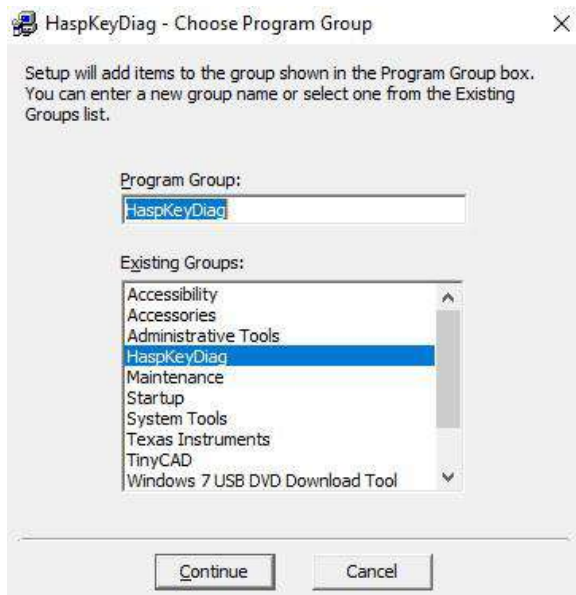
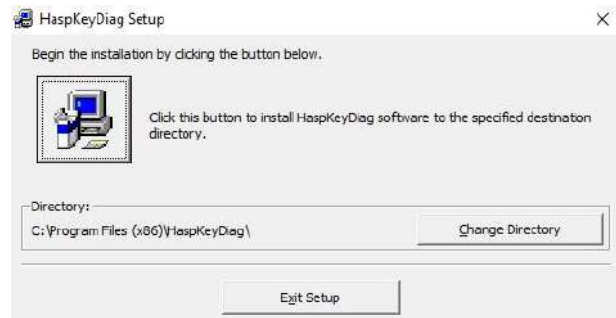
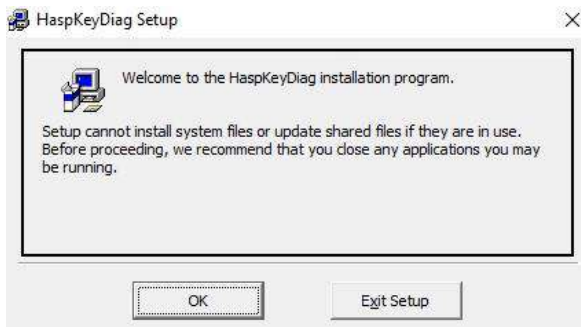
3. Open "HASP UPGRADE KIT".



Open "HaspKeyDiag" folder. Right-click on "setup.exe" and choose "Run as administrator".



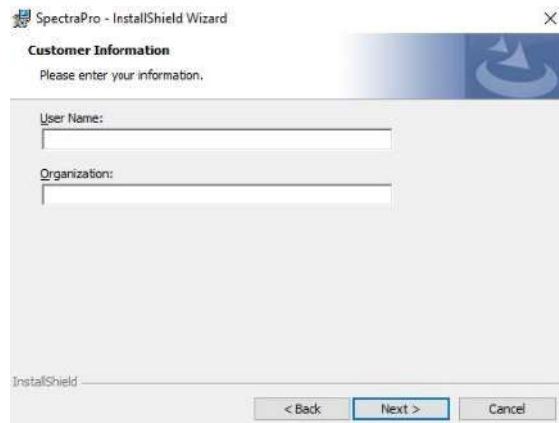
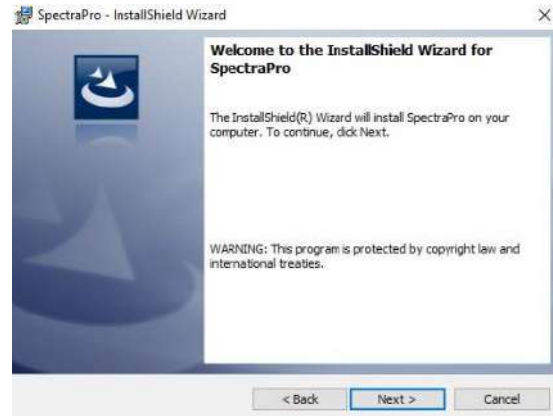
Follow all steps until the driver is installed.



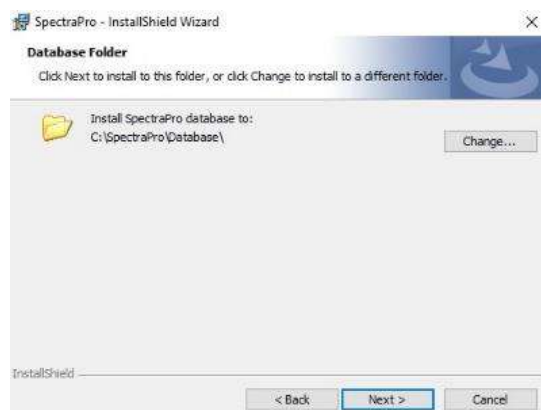
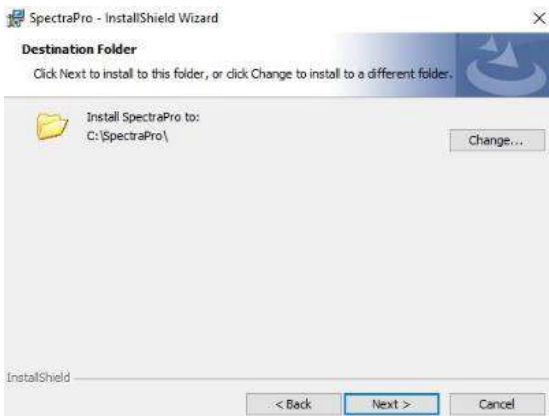
4. Open the SpectraPro folder, Right-click on “setup.exe” and choose “Run as administra

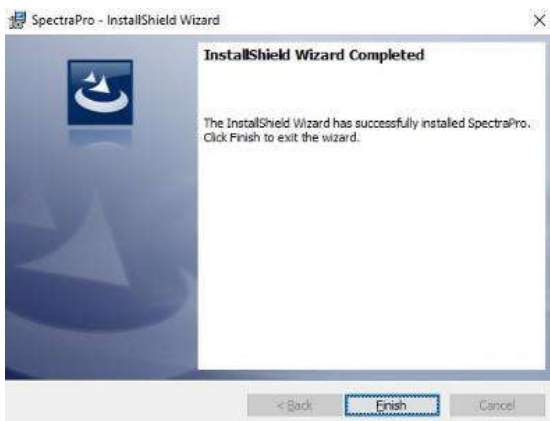
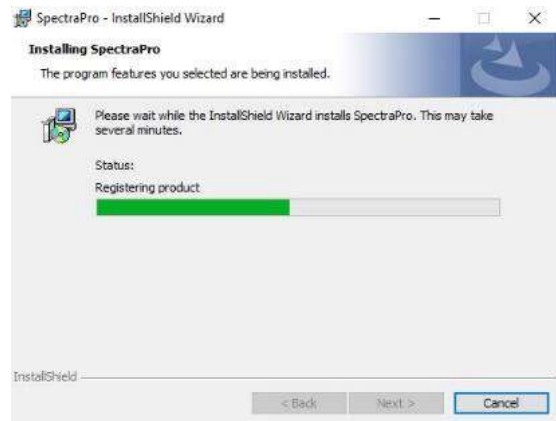
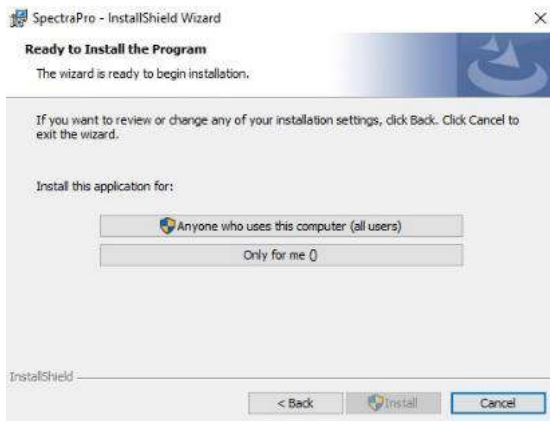


Follow all steps below until the software is installed.



Folders destination should be “c:” as in the picture below, or same partition as Windows is installed.

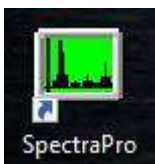




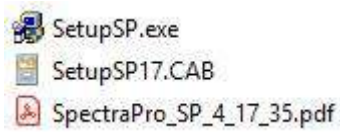
5. Connect the HASP key "QGWB" to a USB port on the PC and wait until drivers are installed automatically.



6. Start SpectraPro by clicking the shortcut which is created on the desktop now and then close it.



7. Open "ServicePack" folder. Right-click on "setup.exe" and choose "Run as administrator".



Follow all steps below until the software is installed.



8. Start SpectraPro by clicking the shortcut.

