

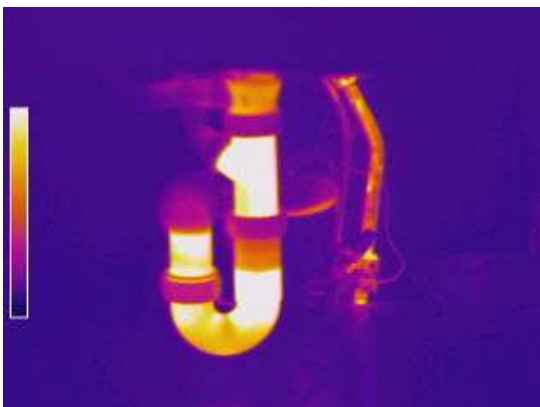
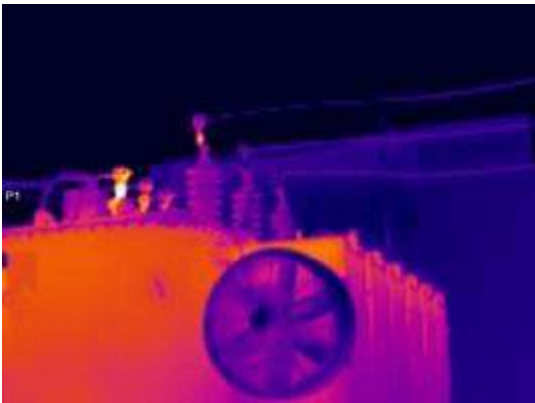
## PK80 Entry Level



The PK80 is a basic, entry level thermal camera that captures still & video recordings of your survey site. The PK80 can access the internet via a Wi-Fi connection. Users can share thermal information with other people anytime, anywhere. It is easy to use and has been designed with the user in mind.

### Key Features

- 5.5" Capacitive Touch Screen
- 80x80 Resolution (6400 pixels)
- 8 MP HD Digital Camera
- Multifunction USB Connector
- Still & Video Recording
- Interchangeable Battery



# PK80 Specifications

Image Performance	PK80
Resolution	80x80
Thermal Sensitivity (N.E.T.D)	≤0.10°C @ 30°C
Field of View/Min. Focus Distance	21° x 21°/0.3m
Focus Mechanism	Fixed Focus
Measurement	
Temperature Range	-20°C to +160°C
Accuracy	±2°C, ±2% of readings
Measurement Tools	3 moveable spots , Auto hot/cold spot capture, isothermal analysis, line analysis, Circle analysis, Rectangular analysis, Line profile
Environmental	
Operating Temperature	0°C~+50°C
Encapsulation	IP54
Shock/Vibration Resistance	25G/2G
Physical Characteristics (Camera Body)	
Weight	415grms
Dimensions	174x102x36 mm

Please be aware specifications can vary from time to time