

JKZ365 Process Control

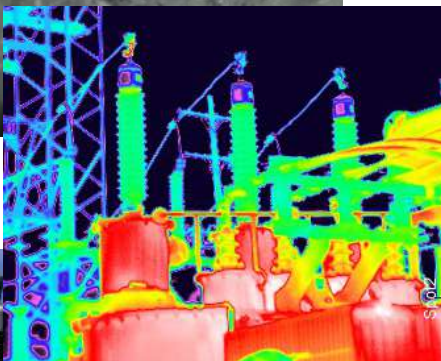
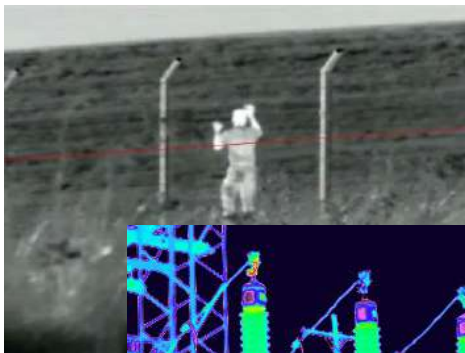


The JKZ365 is SATIR newest addition to our fixed camera range. It combines both thermal and visual imaging together with some AI technology so different parameters can be set up to activate alarms for over temperature applications.

Once the alarm has been activated then the zoom on the digital camera can allow easy identification of the potential defective component and corrective action can be taken.

Using the PTZ will allow the user to monitor a large area with a single camera and being ONVIF & CGI compliant means it can be integrated in to a standard CCTV network or on a stand alone network.

It also has its own SDK integration kit which will allow the end user to bespoke some requirement if required.



Key Features

- Dual camera for complete monitoring
- Temperature Alarms –16x Area boxes ,2x Lines or 20x Spots
- 8/15/25mm Optional fixed lenses available upon request

JKZ365 Specifications

Thermal Camera			
Detector Type	Uncooled IRFPA Microbolometer		
Detector Resolution	400x300/640x512		
Pixel Size	17µm		
Thermal Sensitivity (N.E.T.D)	40mK @F1.0, 300K		
Spectral range	8~14µm		
Image Setting	Polarity LUT/ DVE/ Mirror/ FCC/ /3D DNR Brightness Contrast/ROI		
Colour Palettes	Black-Heat /White-Heat/Rainbow/Iron-Red up to 17 modes		
Thermal Lens			
Lens Type	Fixed		
Focus Control	Manual Focus		
Focal Length	8mm	15mm	25mm
F No.	F1.0	F1.0	F1.0
Angle of View	H:46° V:35.3°	H:25.5° V:19.2°	H:15.4° V:11.6°
Detection Distance Fire (1m*1m)	235m	441m	735m
Detection Distance Man (1.8*0.5m)	235m	441m	735m
Detection Distance Vehicle (4m*1.5m)	722m	1353m	2255m
Recognition Distance Fire (1m*1m)	78m	147m	245m
Recognition Distance Man (1.8*0.5m)	59m	110m	184m
Recognition Distance Vehicle (4m*1.5m)	180m	338m	564m
Visible Camera			
Image Sensor	1/2.8" Sony CMOS		
Effective Resolution	2048x1536		
Shutter Speed	1/5~1/20,000s		
Min. Illumination	Color: 0.01Lux @(F1.2, AGC ON), B/W: 0.1Lux		
S/N Ratio	More than 55dB		
Visible Lens			
Focal Length	4.5~135mm		
Max Aperture	F1.6~F4.4		
Angle of View	H:59.8° ~2.3°		
Optical Zoom	30x		
Focus Control	Auto/Manual		
Close Focus Distance	100mm~1500mm (0.33ft~3.28ft)		
PTZ			
Pan/Tilt Range	Pan:0°~360° endless; Tilt: +90°~-90°		
Pan/Tilt Speed	Pan:0.01°~30° /s; Tilt:0.01°~10° /s		
Preset Speed	Pan:0.01°~30° /s; Tilt:0.01°~10° /s		

JKZ365 Specifications

PTZ	
Presets	400
PTZ Mode	8 Auto Scan, 12 Tour, 6 Track
Speed Setup	Auto/Manual (0-8),
Power Off Memory	Support
Idle Motion	Activate Preset/Scan/Tour/Pattern if there is no command in the specified period
Protocol	SN-SD, Pelco-D
Video and Audio	
Compression	H.265,H.264,MJPEG
Frame Rate	Main Stream: Thermal: D1@25/30fps Visible: 2048x1536 @25/30fps Sub Stream: Thermal: CIF @25/30fps Visible: D1/VGA/640X360/CIF/QCIF/QVGA @25/30fps
Bit Rate Control	CBR/VBR
Bit Rate	Thermal: 100Kbps~6Mbps Visible: Main Stream: 500Kbps~12Mbps: Sub Stream: 100Kbps~6Kbps
Region of Interest	Off/On (8 Zone, Rectangle)
Electronic Image Stabilisation (EIS)	N/A
Digital Zoom	16x
Mirror/Defog/Motion Detection	Support
Privacy Masking	Off/On (4 Areas, Rectangle)
DVE Image Enhance	Support
Audio Compression	G.711,AMR,RAW_PCM (Optional)
Intelligence	
Intelligent Functions	Motion Detection, Disk Alarm, I/O alarm, Temperature alarm
IVS	Perimeter, Single Virtual Fences, Double Virtual Fences, Object left, Object removed
Temperature Detection	
Detection Mode	Spot, Line, Area
Detection Preset	Spot:20, Line:2, Area:16
Temperature Alarm	Over temperature alarm, Temperature difference alarm
Accuracy	±2°C/±2%
Response Time	≤30ms
Effective Temperature Working Environment	-30°C~60°C(-22°F~140°F)
Theory of Temperature Measurement Range	-40°C~150°C(-40°F~302°F)
Temperature Display Mode	Temperature target >5°C, Display absolute temperature value, Temperature target ≤5°C Display relative temperature value (temperature difference DEV = highest value - average)

JKZ365 Specifications

Network		
Ethernet	RJ-45 (10/100 Base-T)	
Protocols	IPv4/IPv6 ,HTTP,RTSP/RTP/RTCP, TCP/UDP, DHCP, DNS, PPPOE, SMTP, SIP ,802.1x	
Interoperability	ONVIF, CGI	
Streaming Type	Unicast	
Max, User Access	10 Users	
Edge Storage	NAS Local PC for instant recording ,Micro SD card 128GB	
Web Viewer	<IE11, Chrome, Firefox	
Web Language	English, Chinese, Polish, Italian, Portuguese, Spanish, Russian, French, Czech, Hungarian	
Interface		
Ethernet	1 Ethernet (10/100 Base-T) R-45 Connector	
Audio	N/A	
RS485	Support	
BNC Output	Output	
Reset Button	Support (Built-in)	
General		
Power Supply	DC24V	
Power Consumption	Max 30W	
Operating Temperature	-30°C~60°C (-22°F~140°F)	
Storage Conditions	0~90% RH	
Certifications	CE/FCC	
Ingress Protection	IP66	
Casing	Metal	
Dimensions	322x192x163mm	
Net Weight	5KG	
Ordering Information		
Type Part	Number	Description
JKZ365	JKZ365-8mm	Thermal 384x288 8mm fixed lens
	JKZ365-15mm	Thermal 384x288 15mm fixed lens
	JKZ365-25mm	Thermal 384x288 25mm fixed lens

Please be aware specifications may be changed without notification